



# L'OPÉRA

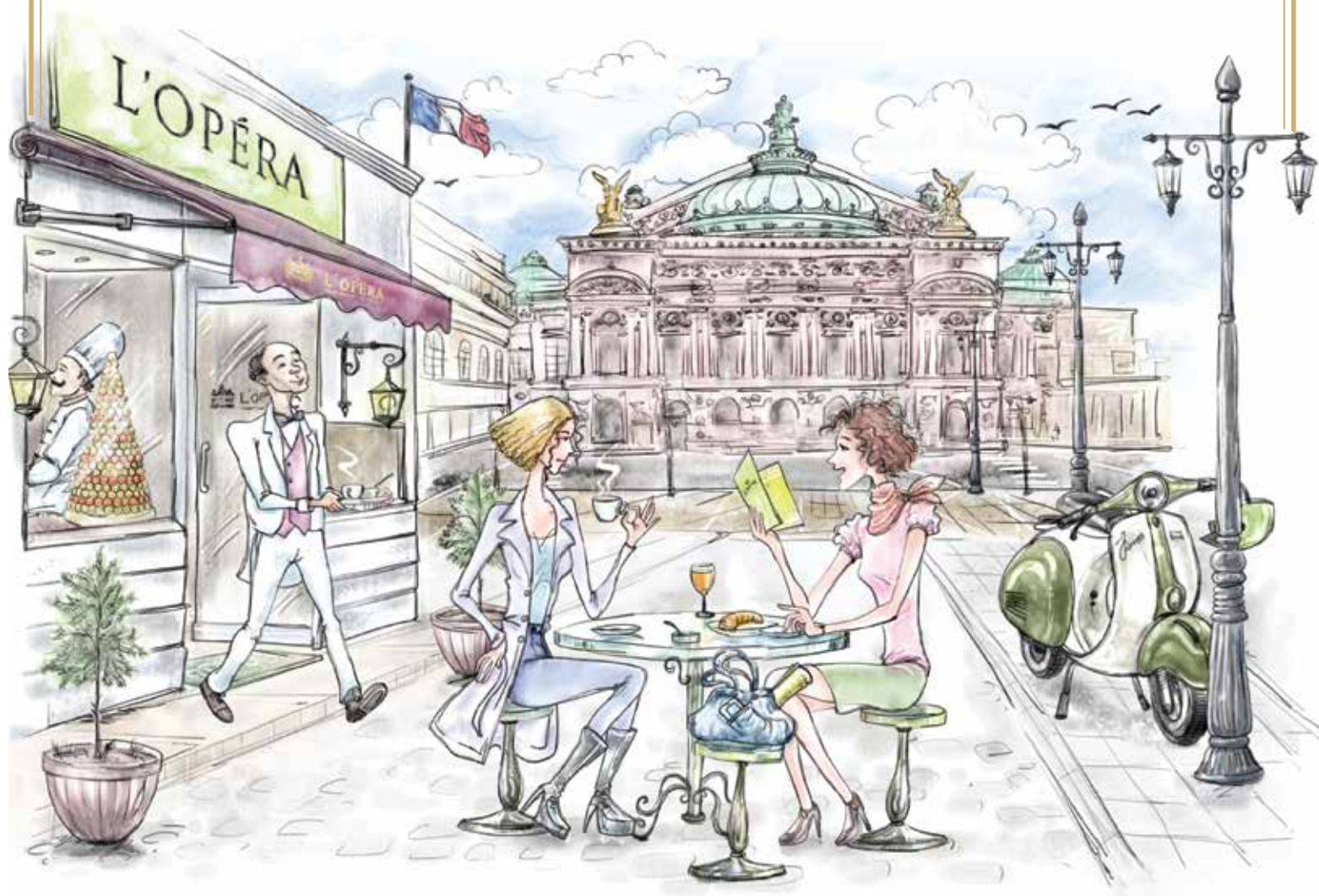
PÂTISSERIE • BOULANGERIE

SALON DE THÉ

*From the onset, Paris' new Opera House was a symbol of excellence and innovation. Legend has it that even before it was built in 1861, the Empress at the time could hardly believe how boldly its plans mixed such different styles into one ambitious yet harmonious whole.*

*At any L'Opéra outlet throughout the Delhi NCR and Dehradun, you will see that same aspiration take a new form, bringing the very best of authentic French bakery, pastry and savoury products and cuisine to you. The three concepts of Pâtisserie-Boulangerie, Salon de Thé (Tea Room) and Café Restaurant each create a true 'Paris moment' in the heart of India, where you can experience the delicate texture and taste of a single Chocolate Macaron and the colourful delight of the Roasted Tomato Basil and Goat Cheese Tarte as well as the spicy thrill of the Pasta Arrabbiata and the delicate creamy luxury of our signature "Opéra" the renowned layered cake and pastry.*

*L'Opéra is the brainchild of Frenchman Laurent Samandari, who envisioned the demand for authentic, high quality French bakery & pastry products while on an internship in India. Later, Laurent's parents, Kazem & Christine Samandari also joined him to help make his vision become reality. The family is actively involved in running the business & maintaining the high standards of service and excellence that it has set for itself.*







# L'OPÉRA

PÂTISSERIE • BOULANGERIE

SALON DE THÉ



## SOUP

- ✓ **Tomato & Basil** ₹385.00  
*Seasonal tomato soup with a hint of fresh basil leaves*  
300 ml (approx.) | 112 kcal
- **French Onion** ₹425.00  
*Classic caramelised onion soup topped with sourdough bread & melted Emmental cheese*  
400 ml (approx.) | 360 kcal | 🍴 🍴
- **Minestrone** ₹435.00  
*Hearty Italian vegetable soup with beans & macaroni*  
300 ml (approx.) | 186 kcal | 🍴
- **Wild Mushroom** ₹445.00  
*Porcini, shiitake & fresh mushrooms*  
300 ml (approx.) | 321 kcal | 🍴
- ▲ **Roasted Garlic & Chicken** ₹455.00  
*Creamy garlic chicken soup with shredded chicken*  
330 ml (approx.) | 369 kcal | 🍴 🍴

*Served with bread basket*



## SALAD

- Caesar**  
*Iceberg lettuce tossed in classic Caesar dressing*
- **Vegetarian** ₹435.00  
280 gm (approx.) | 407 kcal | 🍴 🍴
- ▲ **Chicken** ₹465.00  
350 gm (approx.) | 530 kcal | 🍴
- **Mediterranean** ₹455.00  
*Cucumber, tomato, bell pepper, black olive & feta with an olive oil & lemon dressing*  
300 gm (approx.) | 245 kcal | 🍴



## SALAD BOWL

- **Roasted Beetroot, Feta & Arugula** ₹475.00  
*With candied walnuts, orange segments, balsamic reduction & passionfruit dressing*  
250 gm (approx.) | 404 kcal | 🍴 🍴
- ▲ **Roast Chicken & Guacamole** ₹505.00  
*With roasted cherry tomatoes, sweetcorn kernels, mixed salad leaves & zesty tomato vinaigrette dressing*  
300 gm (approx.) | 660 kcal | 🍴

## FRENCH CLASSICS



## CLASSICS

- ▲ **Croque Monsieur** ₹555.00  
*Classic ham & Emmental toast with béchamel sauce*  
280 gm (approx.) | 663 kcal | 🍴 🍴 🍴
- ▲ **Croque Madame** ₹575.00  
*Classic ham & Emmental toast with béchamel sauce served with a fried egg*  
300 gm (approx.) | 694 kcal | 🍴 🍴 🍴



## QUICHE

*French tart with savoury custard, cheese & filling*

- ▲ **Quiche Végétarienne** ₹305.00  
142 gm (approx.) | 306 kcal | 🍴 🍴 🍴
- **Eggless Mushroom** ₹325.00  
150 gm (approx.) | 380 kcal | 🍴
- ▲ **Chicken** ₹355.00  
140 gm (approx.) | 402 kcal | 🍴 🍴 🍴
- ▲ **Spinach & Goat Cheese** ₹385.00  
144 gm (approx.) | 390 kcal | 🍴 🍴 🍴

*Government taxes extra as applicable | 10% Service Charge*

Should you be allergic to any ingredient, please bring it to the attention of your server. All the products listed contain egg unless marked otherwise (■). The products containing meat clearly state it (e.g. Ham & Emmental Croissant). Vegan products are marked with a symbol (✓). An average active adult requires 2000 kcal energy per day, however calorie needs may vary.



## TARTE

- **Roast Tomato, Basil & Goat Cheese** ₹355.00  
184 gm (approx.) | 397 kcal | 🍴 🍴



## CROISSANT MEALS

- ▲ **Emmental** ₹345.00  
100 gm (approx.) | 303 kcal | 🍴 🍴 🍴
- ▲ **Scrambled Eggs** ₹395.00  
250 gm (approx.) | 877 kcal | 🍴 🍴 🍴
- ▲ **Pink Peppercorn Egg Salad** ₹395.00  
*Pink peppercorn-spiced egg salad, melted mozzarella and lettuce*  
220 gm (approx.) | 329 kcal | 🍴 🍴 🍴
- ▲ **Ham & Emmental** ₹445.00  
140 gm (approx.) | 392 kcal | 🍴 🍴 🍴

*Served with house salad*



## FRENCH TOAST

- ▲ **Classic French Toast** ₹395.00  
*Served with honey & whipped cream*  
250 gm (approx.) | 458 kcal | 🍴 🍴 🍴
- ▲ **Buttered Mushroom** ₹425.00  
*Savoury French toast with mushrooms*  
280 gm (approx.) | 416 kcal | 🍴 🍴 🍴
- ▲ **Monte Cristo** ₹485.00  
*French toast with ham & Emmental & béchamel sauce*  
250 gm (approx.) | 569 kcal | 🍴 🍴 🍴





# L'OPÉRA

PÂTISSERIE • BOULANGERIE  
SALON DE THÉ



## SAVOURY CRÊPES

- ▲ **Three Mushroom** ₹435.00  
Porcini, shiitake & button mushroom flavored with thyme  
460 gm (approx.) | 648 kcal | 🍴 🌱
- ▲ **Spinach & Goat Cheese** ₹465.00  
Creamy spinach with goat cheese  
450 gm (approx.) | 561 kcal | 🍴 🌱
- ▲ **Pesto Chicken** ₹495.00  
Grilled chicken breast marinated in basil pesto  
480 gm (approx.) | 1065 kcal | 🍴 🌱
- ▲ **Ham & Emmental** ₹535.00  
Classic French combination of ham & Emmental cheese with a smear of Dijon mustard  
480 gm (approx.) | 1452 kcal | 🍴 🌱

Served with creamy mornay sauce, tangy red bell pepper sauce & house salad



## SWEET CRÊPES

- ▲ **Beurre Sucre** ₹285.00  
Sugar & French butter, slightly warmed, topped with caramel sauce  
160 gm (approx.) | 389 kcal | 🍴 🌱
- ▲ **Banana & Nutella** ₹325.00  
Hazelnut chocolate spread with sliced banana, topped with chocolate sauce  
250 gm (approx.) | 428 kcal | 🍴 🌱



## EGGS

- ▲ **French Omelette** ₹355.00  
250 gm (approx.) | 382 kcal | 🍴 🌱
- ▲ **Omelette with Mushrooms** ₹375.00  
270 gm (approx.) | 359 kcal | 🍴 🌱
- ▲ **Omelette with Spinach** ₹375.00  
270 gm (approx.) | 388 kcal | 🍴 🌱
- ▲ **Omelette with Cheese** ₹375.00  
280 gm (approx.) | 459 kcal | 🍴 🌱
- ▲ **Scrambled Eggs on Toast** ₹375.00  
250 gm (approx.) | 354 kcal | 🍴 🌱

Served with toasted bread

- ▲ **Truffle Egg Sandwich** ₹395.00  
Truffle-scented egg salad and lettuce sandwiched between slices of soft milkbread  
300 gm (approx.) | 597 kcal | 🍴 🌱
- ▲ **Truffle Egg Chorizo Sandwich** ₹435.00  
Truffle-scented egg salad, chicken chorizo and lettuce sandwiched between slices of soft milk bread  
300 gm (approx.) | 627 kcal | 🍴 🌱

Served with French fries

- ▲ **Eggs Florentine** ₹425.00  
230 gm (approx.) | 516 kcal | 🍴 🌱
- ▲ **Eggs Benedict (Pork Ham)** ₹495.00  
230 gm (approx.) | 645 kcal | 🍴 🌱

Served with house salad



## BREAD BASKET

- **Baguette, Cereal Baguette, Olive Bread & Ciabatta** ₹235.00  
With whipped salted butter & spiced olive oil dip  
280 gm (approx.) | 243 kcal | 🍴



## POSH TOAST

- **Roasted Cherry Tomato** ₹385.00  
Roasted cherry tomato, goat cheese, brown sugar, roasted walnuts & salad leaves  
120 gm (approx.) | 248 kcal | 🍴
- **Grilled Mushrooms** ₹415.00  
Thyme scented grilled mixed mushrooms, shallots, garlic cloves & freshly roasted peppercorns  
170 gm (approx.) | 171 kcal | 🍴
- **Marinated Grilled Chicken** ₹455.00  
Smoked paprika marinated grilled chicken, shallots & gherkins with creamy sauce  
160 gm (approx.) | 305 kcal | 🍴

Served with house salad



## HOT SANDWICH

- **French Onion Mushroom Sandwich** ₹465.00  
Multigrain bread, grilled mixed mushrooms, French onion relish, Dijon & Emmental  
170 gm (approx.) | 238 kcal | 🍴
- **French Onion Chicken Sandwich** ₹485.00  
Multigrain bread, shredded chicken, French onion relish, Dijon & Emmental  
170 gm (approx.) | 351 kcal | 🍴
- **Fajita Chicken Sandwich** ₹495.00  
Multigrain bread, spicy grilled chicken breast, sautéed bell peppers & onion, lettuce, gherkin & cheddar  
170 gm (approx.) | 329 kcal | 🍴

Served with French fries

- **French Fries** ₹355.00  
250 gm (approx.) | 533 kcal

Government taxes extra as applicable | 10% Service Charge

Should you be allergic to any ingredient, please bring it to the attention of your server. All the products listed contain egg unless marked otherwise (🌱). The products containing meat clearly state it (e.g. Ham & Emmental Croissant). Vegan products are marked with a symbol (🌱). An average active adult requires 2000 kcal energy per day, however calorie needs may vary.





# L'OPÉRA

PÂTISSERIE • BOULANGERIE

SALON DE THÉ



## BURGER

- **Classic Veggie** ₹525.00  
*Crispy mixed vegetable patty, seasoned onion & tomato slices, crunchy lettuce & classic mayonnaise*  
 280 gm (approx.) | 362 kcal |
- ▲ **Jerk Spiced Chicken** ₹605.00  
*Spiced chicken patty, seasoned tomato slices, gratinated cheese, avocado mash, crunchy lettuce & jalapeño mayonnaise*  
 300 gm (approx.) | 871 kcal |
- ▲ **Juicy Lamb** ₹655.00  
*Minced lamb patty, charred onion, minty yoghurt & crumbled feta cheese dressing, shredded iceberg lettuce, garlic & mustard mayonnaise*  
 270 gm (approx.) | 583 kcal |

*Served with French fries*



## PIZZA

- **Five Cheese** ₹485.00  
*Cheddar, goat cheese, Parmesan, fresh & grated mozzarella*  
 280 gm (approx.) | 713 kcal |
- **Garden Feast** ₹495.00  
*Broccoli florets, chargrilled bell peppers, corn kernels, black olives & jalapeño*  
 280 gm (approx.) | 554 kcal |
- **Bianca Fungi Pesto** ₹515.00  
*White sauce base, grilled mushrooms, caramelised onions, basil pesto & spinach*  
 280 gm (approx.) | 689 kcal |
- ▲ **BBQ Chicken** ₹565.00  
*Chargrilled bell peppers, jalapeño, fresh & traditional mozzarella*  
 290 gm (approx.) | 587 kcal |
- ▲ **Chorizo & Chicken** ₹575.00  
*Chicken chorizo, hot sauce marinated chicken, red onion & red paprika*  
 290 gm (approx.) | 605 kcal |
- ▲ **Pepperoni** ₹625.00  
*Fresh basil and thyme*  
 230 gm (approx.) | 589 kcal |



## PASTA

- **Choice of Pasta**
- Penne** 120 gm (approx.) | 188 kcal |
- Spaghetti** 150 gm (approx.) | 236 kcal |
- Whole Wheat Penne** 120 gm (approx.) | 410 kcal |
- **Choice of Sauce**
- Arrabbiata** 242 gm (approx.) | 339 kcal
- Three Cheese** 145 gm (approx.) | 379 kcal |
- Aglio e Olio** 54 gm (approx.) | 250 kcal |
- Pesto** 83 gm (approx.) | 242 kcal |
- Creamy Tomato & Chèvre** 145 gm (approx.) | 262 kcal |

### Choice of Topping

- **Broccoli & Mushroom** ₹565.00  
 480 gm (approx.) | 360 kcal
- ▲ **Grilled Chicken** ₹595.00  
 480 gm (approx.) | 958 kcal

*Served with garlic bread*



## RISOTTO

- **Roasted Pumpkin, Mascarpone & Brown Butter** ₹595.00  
*Arborio rice cooked in a rich mascarpone sauce, roasted pumpkin and rosemary scented brown butter*  
 380 gm (approx.) | 423 kcal |
- ▲ **French Onion Chicken** ₹635.00  
*Arborio rice cooked in a French onion sauce, topped with chicken gratinated with Emmental*  
 400 gm (approx.) | 438 kcal |



## LASAGNA

- **Spinach & Sundried Tomato** ₹575.00  
*Sautéed spinach and sundried tomato, cheese sauce and tomato sauce layered with sheets of pasta, topped with mozzarella*  
 400 gm (approx.) | 699 kcal |
- ▲ **Chicken Bolognese** ₹595.00  
*Minced chicken, cheese sauce and tomato sauce layered with sheets of pasta, topped with mozzarella*  
 440 gm (approx.) | 781 kcal |

*Served with house salad*



- **EGGPLANT PARMIGIANA** ₹535.00  
*With Pain de Campagne*  
 400 gm (approx.) | 841 kcal |
- ▲ **CHICKEN PARMIGIANA** ₹645.00  
*With Spaghetti Aglio e Olio*  
 350 gm (approx.) | 861 kcal |
- ▲ **CAJUN-MARINATED CHICKEN LEG** ₹655.00  
*With roasted vegetables, potato wedges & choice of sauce: porcini thyme jus or spicy pink peppercorn & mint jus*  
 515 gm (approx.) | 729 kcal |

Government taxes extra as applicable | 10% Service Charge

Should you be allergic to any ingredient, please bring it to the attention of your server. All the products listed contain egg unless marked otherwise (■). The products containing meat clearly state it (e.g. Ham & Emmental Croissant). Vegan products are marked with a symbol (■). An average active adult requires 2000 kcal energy per day, however calorie needs may vary.



## DESSERT MENU

### VIENNESE



- ▲ Croissant  
65 gm (approx.) | 257 kcal | 🍞🍞🍞
- French Heart  
56 gm (approx.) | 207 kcal | 🍞
- ▲ Raisin Brioche  
74 gm (approx.) | 269 kcal | 🍞🍞🍞🍞
- ▲ Chocolate Croissant  
65 gm (approx.) | 266 kcal | 🍞🍞🍞
- ▲ Tarte au Sucre  
130 gm (approx.) | 793 kcal | 🍞🍞🍞

₹185.00

₹185.00

₹205.00

₹205.00

₹235.00



- ▲ Chocolate Cream Croissant  
114 gm (approx.) | 492 kcal | 🍞🍞🍞🍞 ₹235.00
- Bi-Colour Chocolatine Croissant  
65 gm (approx.) | 300 kcal | 🍞 ₹235.00
- ▲ Pepito  
130 gm (approx.) | 482 kcal | 🍞🍞🍞 ₹265.00
- ▲ Cinnamon Roll  
76 gm (approx.) | 290 kcal | 🍞🍞🍞🍞 ₹275.00
- ▲ Almond Croissant  
122 gm (approx.) | 473 kcal | 🍞🍞🍞🍞 ₹295.00

### PASTRIES



- ▲ Flan Parisien  
160 gm (approx.) | 130 kcal | 🍞🍞
- Apple & Rosemary Tart  
126 gm (approx.) | 454 kcal | 🍞
- ▲ Paris Brest  
74 gm (approx.) | 189 kcal | 🍞🍞🍞🍞

₹215.00

₹235.00

₹295.00

₹325.00

₹335.00

₹345.00

₹345.00

₹345.00

₹345.00

₹355.00



- ▲ Lemon Tart  
110 gm (approx.) | 242 kcal | 🍞🍞🍞
- ▲ Almond & Orange Tart  
84 gm (approx.) | 383 kcal | 🍞🍞🍞
- Pecan Nut Brownie  
95 gm (approx.) | 264 kcal | 🍞🍞🍞
- ▲ Opéra\*  
82 gm (approx.) | 346 kcal | 🍞🍞🍞🍞
- ▲ Berry Mousse Cheesecake  
162 gm (approx.) | 564 kcal | 🍞🍞🍞
- ▲ Mille Feuille  
115 gm (approx.) | 452 kcal | 🍞🍞
- ▲ Chocolate Tart  
99 gm (approx.) | 299 kcal | 🍞🍞🍞🍞

- Sachertorte  
121 gm (approx.) | 509 kcal | 🍞🍞🍞 ₹365.00
- ▲ Tiramisu\*  
110 gm (approx.) | 395 kcal | 🍞 ₹365.00
- ▲ Banoffee  
116 gm (approx.) | 604 kcal | 🍞🍞🍞🍞 ₹375.00
- ▲ Chocolate Trio Verrine  
106 gm (approx.) | 394 kcal | 🍞🍞🍞🍞 ₹395.00
- ▲ Forêt Noire (Black Forest)  
103 gm (approx.) | 536 kcal | 🍞🍞🍞 ₹395.00
- ▲ Chocolate Orange & Walnut  
140 gm (approx.) | 540 kcal | 🍞🍞🍞 ₹405.00
- Nutty Chocolate Treat  
94 gm (approx.) | 434 kcal | 🍞🍞🍞 ₹405.00
- ▲ Truffon  
100 gm (approx.) | 436 kcal | 🍞🍞🍞 ₹425.00
- ▲ Royal Chocolate  
103 gm (approx.) | 393 kcal | 🍞🍞🍞 ₹425.00



### ÉCLAIRS

₹255.00



- ▲ Chocolate  
82 gm (approx.) | 231 kcal | 🍞🍞🍞
- ▲ Salty Caramel  
85 gm (approx.) | 126 kcal | 🍞🍞🍞
- ▲ Coffee\*  
85 gm (approx.) | 208 kcal | 🍞🍞

### SUGAR-FREE

- Goopy Gateau  
120 gm (approx.) | 488 kcal | 🍞🍞🍞 ₹305.00
- Chocolate Cube  
140 gm (approx.) | 117 kcal | 🍞🍞 ₹405.00



### MACARONS ₹145.00

- |  |   |   |   |
|--|---|---|---|
| <ul style="list-style-type: none"> <li>▲ Chocolate<br/>20 gm (approx.)   92 kcal   🍞🍞🍞</li> <li>▲ Pistachio<br/>25 gm (approx.)   114 kcal   🍞🍞</li> <li>▲ Raspberry<br/>20 gm (approx.)   78 kcal   🍞🍞🍞</li> <li>✓ Raspberry<br/>20 gm (approx.)   76 kcal   🍞</li> </ul> | <ul style="list-style-type: none"> <li>▲ Lemon<br/>20 gm (approx.)   92 kcal   🍞🍞</li> <li>▲ Passion Fruit<br/>20 gm (approx.)   72 kcal   🍞🍞🍞</li> <li>▲ Praline Mocha*<br/>20 gm (approx.)   95 kcal   🍞🍞🍞</li> <li>✓ Pistachio<br/>20 gm (approx.)   89 kcal   🍞🍞</li> </ul> | <ul style="list-style-type: none"> <li>▲ Rose<br/>30 gm (approx.)   134 kcal   🍞🍞🍞</li> <li>▲ Salty Caramel<br/>20 gm (approx.)   87 kcal   🍞🍞</li> <li>▲ Speculoos<br/>20 gm (approx.)   72 kcal   🍞🍞🍞🍞</li> </ul> | <ul style="list-style-type: none"> <li>▲ Vanilla<br/>20 gm (approx.)   118 kcal   🍞🍞🍞</li> <li>▲ Coffee*<br/>20 gm (approx.)   78 kcal   🍞🍞🍞</li> <li>✓ Chocolate<br/>20 gm (approx.)   104 kcal   🍞</li> </ul> |
|--|---|---|---|

\*Contains caffeine

Government taxes extra as applicable | 10% Service Charge

Should you be allergic to any ingredient, please bring it to the attention of your server. All the products listed contain egg unless marked otherwise (🍳). The products containing meat clearly state it (e.g. Ham & Emmental Croissant). Vegan products are marked with a symbol (🌱). An average active adult requires 2000 kcal energy per day, however calorie needs may vary.





L'OPÉRA  
PÂTISSERIE • BOULANGERIE

SALON DE THÉ

## BEVERAGE MENU

### HOT COFFEE

- Espresso\* (Single) ₹215.00  
30 ml (approx.) | 66 kcal
- Macchiato ₹235.00  
50 ml (approx.) | 96 kcal | ☞
- Americano\* ₹255.00  
200 ml (approx.) | 66 kcal
- Flat White ₹285.00  
250 ml (approx.) | 168 kcal | ☞
- Cappuccino\* ₹285.00  
House Blend  
200 ml (approx.) | 127 kcal | ☞
- French Vanilla ₹365.00  
200 ml (approx.) | 123 kcal | ☞
- Cinnamon Hazelnut ₹365.00  
200 ml (approx.) | 123 kcal | ☞
- Espresso\* (Double) ₹315.00  
60 ml (approx.) | 112 kcal
- Café Latte\* ₹315.00  
House Blend  
200 ml (approx.) | 153 kcal | ☞
- French Vanilla ₹385.00  
200 ml (approx.) | 123 kcal | ☞
- Cinnamon Hazelnut ₹385.00  
200 ml (approx.) | 123 kcal | ☞
- Café Mocha\* ₹385.00  
190 ml (approx.) | 153 kcal | ☞
- +Extra Shot ₹125.00

House blend is made of AA grade, shade grown Arabica beans custom roasted for L'Opéra by Cohoma Coffee Company.

### CHOCOLATE

- Hot Chocolate\* ₹365.00  
160 ml (approx.) | 397 kcal | ☞ ☞
- Hazelnut Cold Chocolate\*\* ₹395.00  
365 ml (approx.) | 737 kcal | ☞ ☞ ☞

### CHOICE OF MILK

- Add:
- Soy Milk ₹65.00  
39 kcal per 100 ml (approx.) | ☞
  - Almond Milk ₹65.00  
39 kcal per 100 ml (approx.) | ☞

### COLD PRESSED JUICES

- Mango ₹150.00  
240 ml (approx.) | 143 kcal
- Guava ₹175.00  
240 ml (approx.) | 104 kcal
- Orange ₹240.00  
240 ml (approx.) | 110 kcal
- Life ₹240.00  
240 ml (approx.) | 133 kcal
- Pomegranate ₹240.00  
240 ml (approx.) | 149 kcal

### SOFT DRINKS

- Coke\* ₹135.00  
330 ml (approx.) | 145 kcal
- Diet Coke\* ₹135.00  
330 ml (approx.) | 0 kcal
- Still Water ₹150.00  
500 ml (approx.) | 0 kcal
- Sparkling Water ₹150.00  
500 ml (approx.) | 0 kcal

### COLD COFFEE

- Iced Americano\* ₹255.00  
365 ml (approx.) | 77 kcal
- Iced Latte\* ₹315.00  
365 ml (approx.) | 167 kcal | ☞
- Classic Cold Coffee\* ₹335.00  
365 ml (approx.) | 242 kcal | ☞

### ICED TEA INFUSIONS

- Lemon Iced Tea ₹225.00  
370 ml (approx.) | 177 kcal
- Flowery Ballad Iced Tea ₹225.00  
370 ml (approx.) | 1 kcal
- Earl Grey Iced Tea ₹225.00  
370 ml (approx.) | 1 kcal
- Peach Iced Tea ₹225.00  
370 ml (approx.) | 211 kcal



### SUMMER COOLERS

- Strawberry Fizz ₹315.00  
390 ml (approx.) | 392 kcal
- Cucumber Cooler ₹315.00  
390 ml (approx.) | 348 kcal
- Dream of Summer ₹315.00  
390 ml (approx.) | 267 kcal
- Mixed Berry Smoothie ₹325.00  
255 ml (approx.) | 275 kcal
- Three Layer Kiwi ₹325.00  
300 ml (approx.) | 232 kcal
- Peru Pyala ₹325.00  
270 ml (approx.) | 216 kcal
- Watermelon Cooler ₹325.00  
300 ml (approx.) | 117 kcal

- CISK Alcohol-Free Beer ₹245.00  
160 gm (approx.) | 341 kcal

### CLASSIC SHAKES

- Chocolate ₹285.00  
365 ml (approx.) | 376 kcal | ☞
- Strawberry ₹285.00  
365 ml (approx.) | 222 kcal | ☞
- French Vanilla ₹285.00  
365 ml (approx.) | 193 kcal | ☞

Photos are for reference only

\*Contains caffeine

\*\*Seasonal products

Government taxes extra as applicable | 10% Service Charge

Should you be allergic to any ingredient, please bring it to the attention of your server. All the products listed contain egg unless marked otherwise (☞). The products containing meat clearly state it (e.g. Ham & Emmental Croissant). Vegan products are marked with a symbol (☑). An average active adult requires 2000 kcal energy per day, however calorie needs may vary.

© French Bakery Pvt. Ltd. L'OPÉRA is registered trade mark of French Bakery Pvt. Ltd. - 01.24




Follow @loperaindia







## TEA






- |  |         |
|--|---------|
| <p>■ <b>Masala Tea</b><br/> <i>Delectable Masala Tea composed of ginger, cardamom, cloves, nutmeg &amp; pepper.</i><br/>           200 ml (approx.)   1 kcal</p>   | ₹235.00 |
| <p>■ <b>English Breakfast Tea</b><br/> <i>Traditional blend of black teas, can be enjoyed plain or with a drop of milk.</i><br/>           200 ml (approx.)   1 kcal   </p>     | ₹235.00 |
| <p>■ <b>Earl Grey Grace</b><br/> <i>A unique blend of Earl Grey with Camellia sinensis, bergamot extract, rose and lavender.</i><br/>           200 ml (approx.)   1 kcal</p>  | ₹235.00 |
| <p>■ <b>Assam Crescendo</b><br/> <i>Assam golden tips, can be enjoyed plain or with a drop of milk.</i><br/>           200 ml (approx.)   13 kcal   </p>                      | ₹235.00 |
| <p>■ <b>L'Opéra Chai</b><br/> <i>Rich black Assam tea combining strength with a flavor of honey. Best enjoyed with milk.</i><br/>           200 ml (approx.)   18 kcal   </p> | ₹235.00 |
| <p>■ <b>Wild Forest Oolong</b><br/> <i>Rare blend of Himalayan herbs. Infused with fennel, cinnamon, star anise and other select plants from the Himalayas and Kangra Valley.</i><br/>           200 ml (approx.)   1 kcal</p>                                   | ₹265.00 |
| <p>■ <b>White Orchid Duet</b><br/> <i>Hand rolled white tea, rich in antioxidants with a light taste and color.</i><br/>           200 ml (approx.)   6 kcal</p>   | ₹265.00 |
| <p>■ <b>Green Symphony</b><br/> <i>Organic Darjeeling green tea.</i><br/>           200 ml (approx.)   1 kcal</p>  | ₹265.00 |

## TEA INFUSIONS

- |   |         |
|---|---------|
| <p>■ <b>Ode to the Hills</b><br/> <i>A blend of lemongrass, hibiscus and mint with a lemony aroma.</i><br/>           200 ml (approx.)   1 kcal</p>                           | ₹265.00 |
| <p>■ <b>Flowery Ballad</b><br/> <i>Infusion of the renowned Indian Rose as a base with an addition of cardamom and cinnamon.</i><br/>           200 ml (approx.)   1 kcal</p> | ₹265.00 |



### Allergen Information:

-  Cereals containing gluten, i.e. wheat, rye, barley, oats, spelt or their hybridized strains and products of these.
-  Milk and milk products.
-  Eggs and egg products.
-  Groundnut, tree nuts and their products.
-  Soybeans and their products.

Government taxes extra as applicable | 10% Service Charge

Should you be allergic to any ingredient, please bring it to the attention of your server. All the products listed contain egg unless marked otherwise (🥚). The products containing meat clearly state it (e.g. Ham & Emmental Croissant). Vegan products are marked with a symbol (🌱). An average active adult requires 2000 kcal energy per day, however calorie needs may vary.

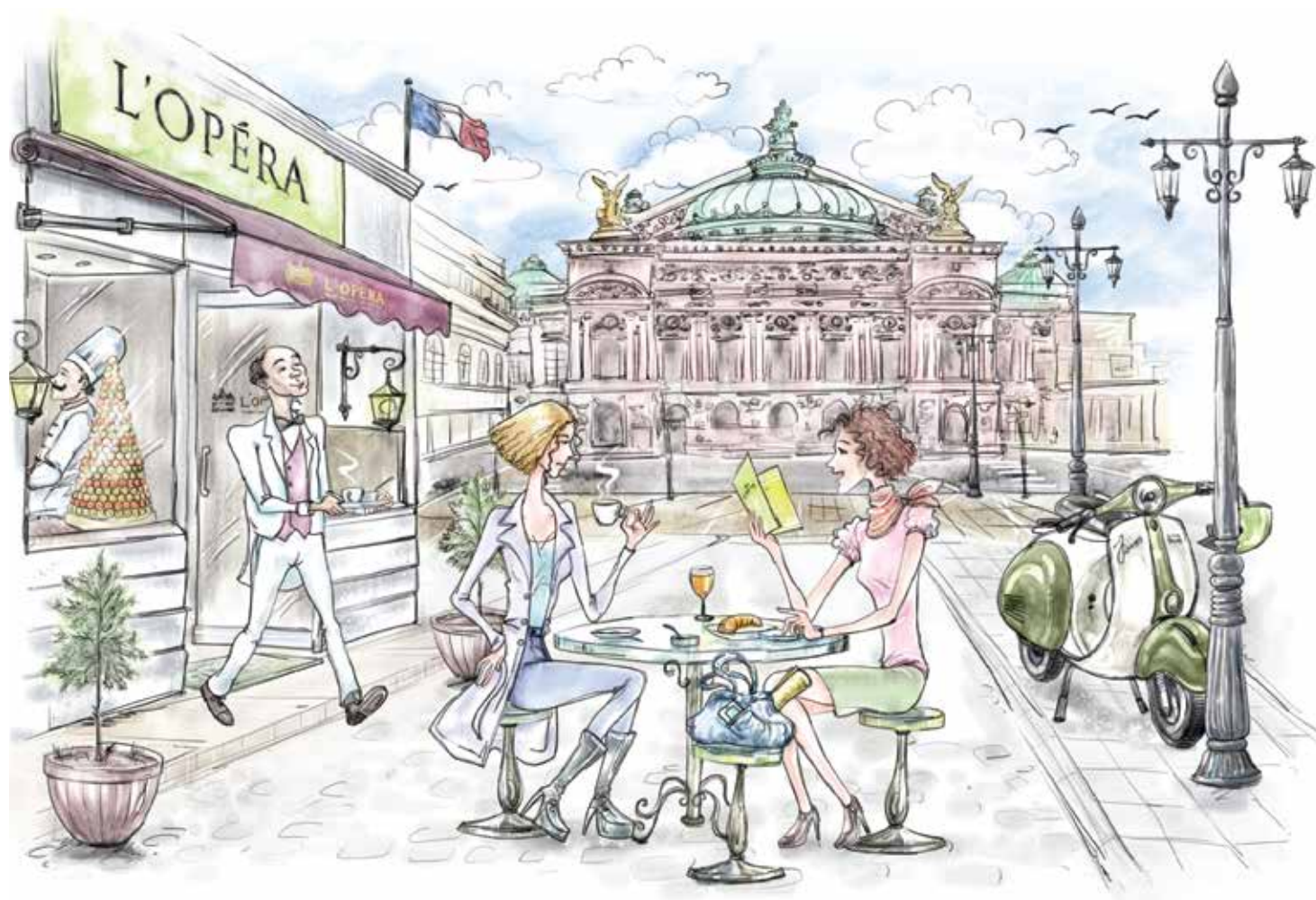




# L'OPÉRA

PÂTISSERIE • BOULANGERIE

SALON DE THÉ



To order call us on +91 8800097255

Enroll yourselves in L'Opéra's Exclusive Loyalty Programme and get 5% of your bill as Première credits (each worth Rs.1). For more information and to get enrolled, visit: <https://loperaindia.com/loyalty-programme/>

FOLLOW US ON



LOPERAINDIA



[WWW.LOPERAINDIA.COM](http://WWW.LOPERAINDIA.COM)

+91 8800097255 | [contact@frenchbakery.in](mailto:contact@frenchbakery.in)